



We Know Water.

**UNIVERSAL BI-LEVEL MODULAR
WITH BUILT IN HANDS-FREE BOTTLE FILLER**

- **M8CREBF**
- **M12CREBF**
- **MCREBF**

Suggested Specification

Model M8CREBF shall deliver 8.0 gph of 50°F degree water at 90°F ambient and 80°F inlet water per ASHRAE 18 testing. Model M12CREBF shall deliver 12.0 gph of 50°F degree water at 90°F ambient and 80°F inlet water per ASHRAE 18 testing. Model MCREBF is a non-refrigerated unit. Shall include two vandal-resistant push buttons to activate the flow of water and a low flow one piece bubbler with flexible guard. The fountains shall be designed to eliminate splashing and standing water. Water saver bubbler to reduce waste water by 50% and shall have flexible guard and operate between 20 and 100 PSI. Key Aqua Pointe™ bottle filler components contain Freshield®, which utilizes a silver-based antimicrobial compound to protect the surfaces from discoloration, odors and degradation caused by the growth of micro-organisms and mildew. Cabinet finish shall be brushed stainless steel. Shall use R-134a refrigerant. Shall comply with ANSI 117.1 and ADA. Shall be listed by Underwriters Laboratories to US and Canadian standards. Shall comply with NSF/ANSI 61 and NSF/ANSI 372.



	M8CREBF	M12CREBF	MCREBF
Features:	<ul style="list-style-type: none"> • Built-in 100 micron strainer stops particles before they enter the waterway • Two vandal-resistant antimicrobial push buttons • Hands-free bottle filler with 20 second shut off, integrated bottle counter and filter monitor • Waterways are Lead-Free in materials & construction • Flexible bubbler guard • Brushed stainless steel finish • Universal design: high right or high left • High efficiency cooling system • Built in panel locks for easy access to chiller and filtration 		
Power:	115 Volts, 60 Hz		
Activation By:	Contactless Sensor on Bottle Filler and Manual Activation on Fountains.		
Mounting Type:	In Wall		
Chilling Option:	8.0 gph	12.0 gph	Non-Refrigerated
Installation Location:	Indoor		

Installation

- Prior to rough-in consult with local, state and federal codes for proper mounting height
- Shipped with complete instructions
- Frame allows for universal installation
- Recessed mounting frame included, but water supply and drain required

Finishes

- Standard cabinet finish: Stainless steel

Options

- One piece chrome plated brass bubbler (036700-001)

Limited 5-Year Warranty

(Continental limits of the United States and Canada) Five years on the sealed refrigeration system and most component parts. Detailed warranty certificate enclosed with each water cooler; sample available upon request.

Export Warranty

One year on components parts. Detailed warranty certificate enclosed with each drinking fountain; sample copy available upon request.

Certifications/Compliance

- Certified to UL 399 and CAN/CSA C22.2 No.120 (electric water coolers only)
- Product Certified to NSF/ANSI Standard 61-G & 372 and conforms with the lead content requirements for "Lead Free" plumbing as defined by California, Vermont, Maryland, and Louisiana state laws and the U.S. Safe Drinking Water Act
- These waters coolers comply with the requirements of ADA (Americans with Disabilities Act) when properly installed



TOLL FREE: 800-442-6622
PITTSBURGH: 412-781-9100
www.equiparts.net

That Hard to Find Part is Right Here !

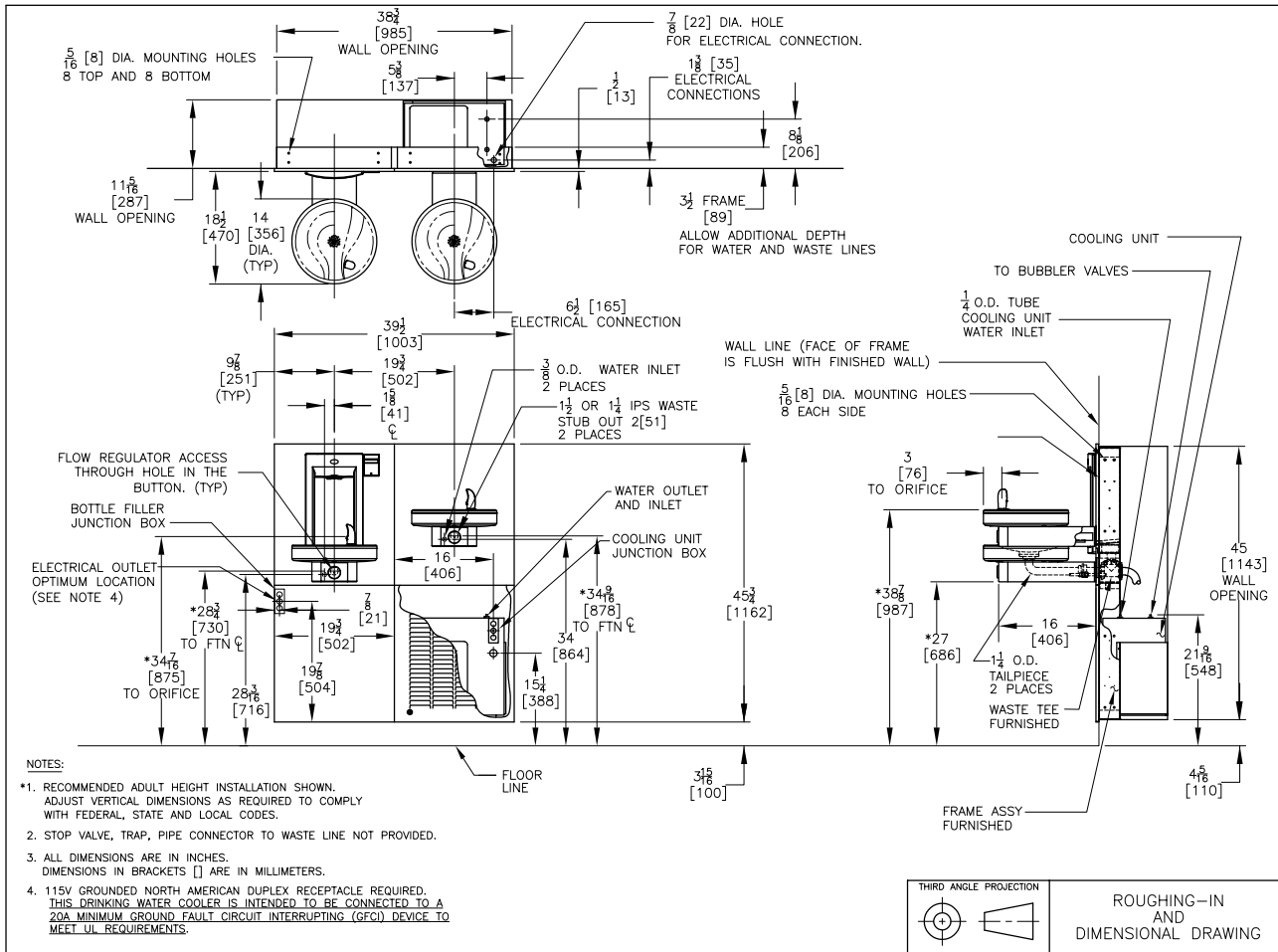
WARNING:
 Cancer and Reproductive Harm
www.P65Warnings.ca.gov

*Industry standard rating condition 80°F inlet water temperature



Specifications subject to change without notice

OASIS® UNIVERSAL BI-LEVEL MODULAR WITH BUILT IN HANDS-FREE BOTTLE FILLER




TOLL FREE: 800-442-6622
PITTSBURGH: 412-781-9100
www.equiparts.net
That Hard to Find Part is Right Here!

WE KNOW WATER.

OASIS is a registered trademark of LVD Acquisition, LLC dba OASIS International, © 2022 LVD Acquisition | AS0032-F-2201