

402-1.6

**"L.C." LOW CONSUMPTION
FLUSH VALVE (1.6 GALS. PER FLUSH)**

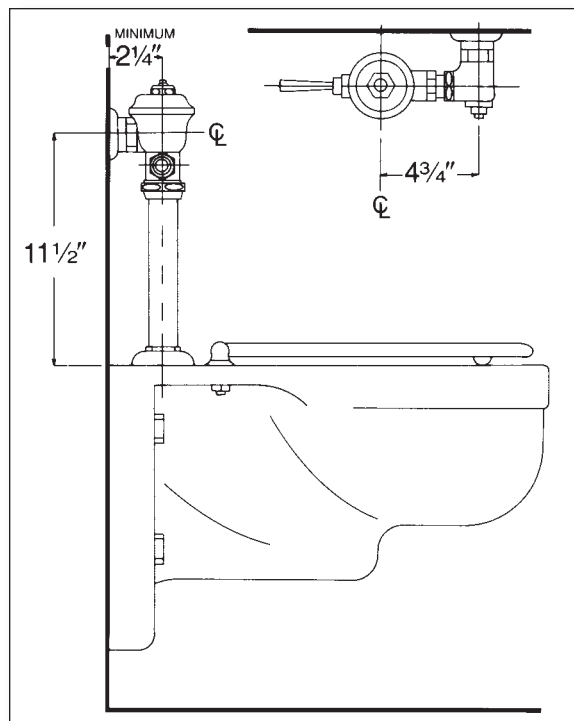
Polished chrome plated flush valve, diaphragm type, 1.6 gallons per flush, externally adjustable, with 1" capped screwdrive angle stop with back-check, renewable main valve seat, metal "Rubberflex" oscillating handle, "Turn-to-Silence" equipment, with "Kwikfit" threaded union tailpiece, vacuum breaker, wall flange, spud nut and spud flange for 1½" top spud.

Variations

- ☐ C – 3" Oscillating disc
- ☐ D – Bumper on Valve (for seat with cover)
- ☐ G – Bumper on angle stop (for seat without cover)
- ☐ L – Handle or push-button on front of valve
- ☐ T6 – Heavy cast wall flange with allen head set screw
- ☐ T7 – Nickel-silver handle, push-button, or oscillating disc, as applicable
- ☐ T8 – Sweat inlet stop
- ☐ T36 – Solid ring wall support for flush connection
- ☐ T42 – Sweat adapter kit for stop
- ☐ T46 – Split wall support for flush connection

Remarks

* *For use with 1.6 gallon low consumption water closet*



TOLL FREE: 800-442-6622

PITTSBURGH: 412-781-9100

www.equiparts.net

That Hard to Find Part is Right Here !

Delany
Since 1879
Products™