

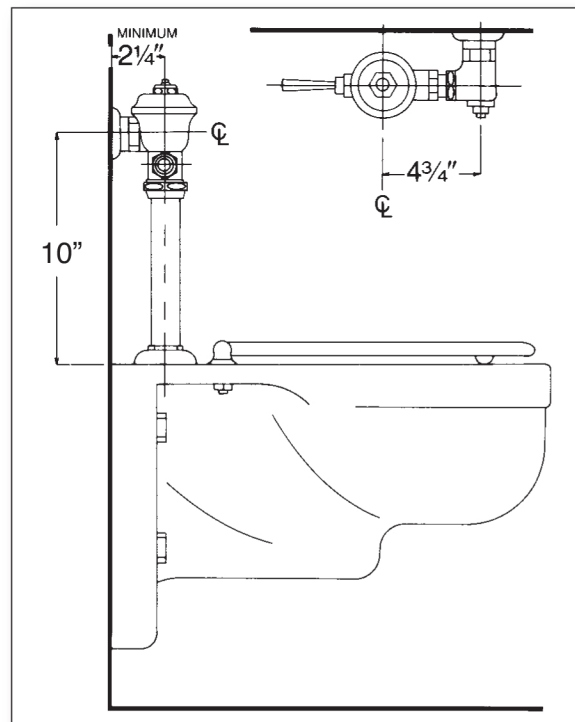
Polished chrome plated flush valve, chloramine resistant diaphragm, 3.5 gallons per flush, externally adjustable, with 1" capped screwdrive angle stop with back-check, renewable main valve seat, metal "Rubberflex" oscillating handle, "Turn-to-Silence" equipment, with "Kwikfit" threaded union tailpiece, vacuum breaker, wall flange, spud nut and spud flange for 1½" top spud.

Variations

- ☐ O – Flush connection for 1¼" spud
- ☐ T36 – Solid ring wall support for flush connection
- ☐ T42 – Sweat adapter kit for stop
- ☐ T46 – Split ring wall support for flush connection

Remarks

* For use with 3.5 gallon low consumption water closet



TOLL FREE: 800-442-6622

PITTSBURGH: 412-781-9100

www.equiparts.net

That Hard to Find Part is Right Here !

