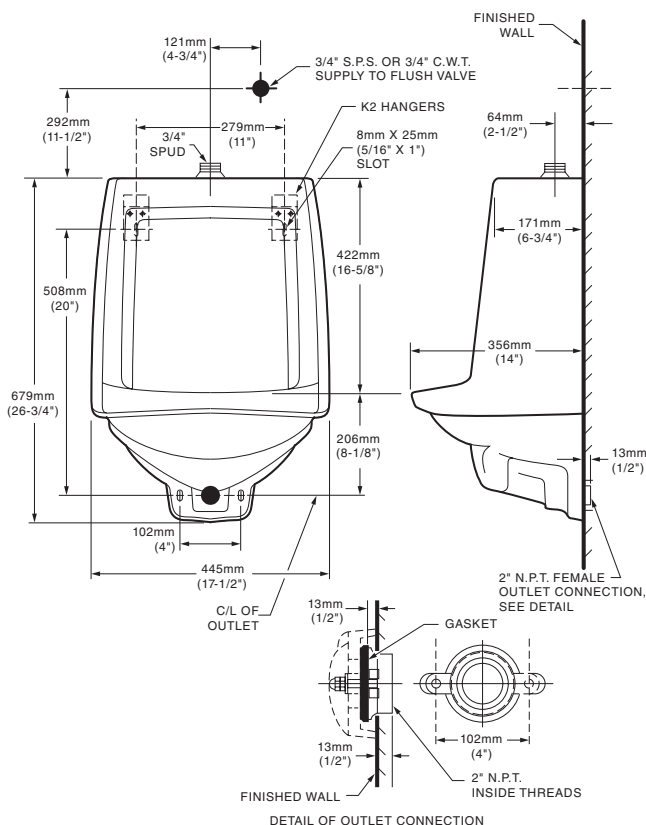




**TRIMBROOK™  
URINAL  
VITREOUS CHINA**

- Vitreous china
- Low-consumption (3.8 Lpf/1.0 gpf)
- Flushing rim
- Siphon jet flush action
- Extended sides for privacy
- 3/4" inlet spud
- Outlet connection threaded 2" inside (NPTF)
- 2 wall hangers
- Fixture only
- Meets ANSI flush requirements at 1.0 GPF

- ASME A112.19.2-2008/CSA B45.1-08 for Vitreous China Fixtures



- When installed so top of rim is 432mm (17") from finished floor.