

Cadet Chair Height Elongated Pressure-Assisted Toilet 1.6 gpf / 6.0 Lpf

☐ 2467.016

- Vitreous china
- Low-consumption (1.6 gpf/6.0 Lpf)
- EverClean® surface inhibits the growth of stain- and odor-causing bacteria, mold, and mildew on the surface
- Bowl rim at 16-1/2" for accessible applications
- Elongated bowl
- Pressure-assisted siphon jet flush action
- Fully-glazed 2-1/8" trapway
- 10 x 12" water surface area
- Close-coupled Flushometer tank*
- Metal chrome trip lever
- Speed Connect® tank/bowl coupling system
- Sanitary dam on bowl
- Two bolt caps
- 100% factory flush tested
- 12" Rough-in

- ☐ 2467.164 Same as above except with slotted rim bowl for bed pan holding (white only)
- ☐ 3483.016 Bowl with two bolt caps
- ☐ 3483.001 Same as above, Universal Bowl
- ☐ 3484.001 Bowl with slotted rim for bed pan holding with two bolt caps (white only)
- ☐ 4142.016 Tank complete with coupling components

Nominal Dimensions:

768 x 521 x 781mm
(30-1/4" x 20-1/2" x 30-3/4")

Fixture only, seat and supply by others

Recommended working pressure range
25 psi - 80 psi

Alternate Configurations Available:

- ☐ 4142.600 Tank and tank cover only with tank cover locking device
- ☐ 4142.800 Tank and tank cover only with right hand trip lever
- ☐ 4142.900 Tank complete with right hand trip lever and tank cover locking device

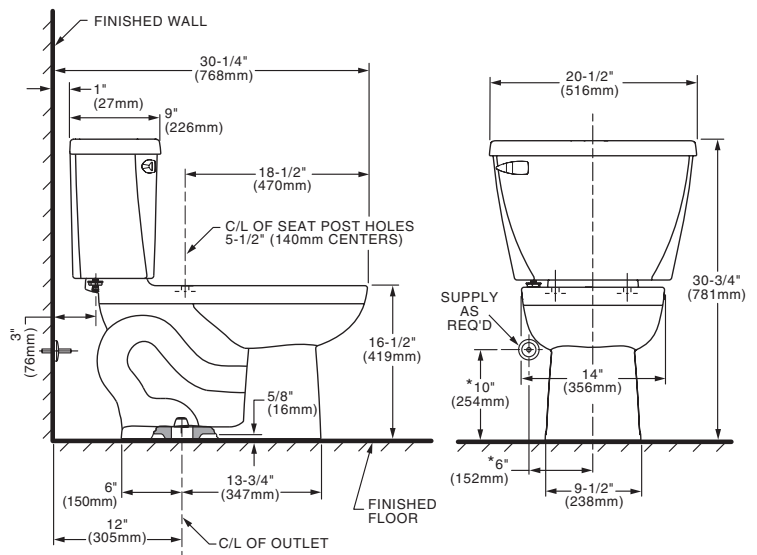
Compliance Certifications -

Meets or Exceeds the Following Specifications:

- ASME A112.19.2-2008 / CSA B45.1-08 for Vitreous China Fixtures

To Be Specified:

- ☐ Color: ☐ White
- ☐ Seat: American Standard #5503A00B Transitional slow-close solid plastic closed front seat with cover
- ☐ American Standard #5257A65MT Cardiff EverClean® slow-close solid plastic closed front seat with cover
- ☐ Alternate Seat:



NOTES:

THIS TOILET IS DESIGNED TO ROUGH-IN AT A MINIMUM DIMENSION OF 305mm (12") FROM FINISHED WALL TO C/L OF OUTLET. SUPPLY NOT INCLUDED WITH FIXTURE AND MUST BE ORDERED SEPARATELY.
* DIMENSION SHOWN FOR LOCATION OF SUPPLY IS SUGGESTED.

IMPORTANT: Dimensions of fixtures are nominal and may vary within the range of tolerances established by ASME A112.19.2-2008 / CSH B45.1-08. These measurements are subject to change or cancellation. No responsibility is assumed for use of superseded or voided pages.



MEETS THE AMERICANS WITH DISABILITIES ACT GUIDELINES
AND ANSI A117.1 REQUIREMENTS FOR ACCESSIBLE AND USABLE
BUILDING FACILITIES - CHECK LOCAL CODES.