



**We Know Water.**

**VERSACOOLER® II WITH VERSAFILLER®**

- **PG8SBF**
- **PGSBF**

**Suggested Specification**

Model PG8SBF shall deliver 8.0 gph of 50°F water at 90°F ambient and 80°F inlet water per ASHRAE 18 testing. Model PG8SBF shall include PG8AC and the VersaFiller Sports Bottle Filler with independent manual activation; lower unit shall have four push pads to activate the manual flow of water for the cooler. VersaFiller components contain Freshield®, which utilizes a silver-based antimicrobial compound to protect the surfaces from discoloration, odors and degradation caused by the growth of micro-organisms and mildew. Basin shall be designed to eliminate splashing and standing water. Water saver bubbler to reduce waste water by 50% and shall have flexible guard and operate between 20 and 100 PSI. Cabinet finish shall be brushed stainless steel or greystone on galvanized steel. Shall use R-134a refrigerant. Shall comply with ANSI 117.1 and ADA. Shall be listed by Underwriters Laboratories to US and Canadian standards. Shall comply with NSF/ANSI 61 and NSF/ANSI 372.



|                               | <b>PG8SBF</b>                                                                                                                                                                                                                                                                                                                                                                                                                                                                                                                                                      | <b>PGSBF</b>     |
|-------------------------------|--------------------------------------------------------------------------------------------------------------------------------------------------------------------------------------------------------------------------------------------------------------------------------------------------------------------------------------------------------------------------------------------------------------------------------------------------------------------------------------------------------------------------------------------------------------------|------------------|
| <b>Features:</b>              | <ul style="list-style-type: none"> <li>• Built-in 100 micron strainer stops particles before they enter the waterway</li> <li>• Waterways are Lead-Free in materials &amp; construction</li> <li>• Flexible one-piece water saver bubbler infused with silver-based antimicrobial additive</li> <li>• Stainless steel top and heavy duty galvanized steel frame</li> <li>• High efficiency cooling system</li> <li>• Four push pads</li> <li>• External stream height adjustment on lower unit</li> <li>• Independent mechanical activation VersaFiller</li> </ul> |                  |
| <b>Filtration:</b>            | Option to add VersaFilter Filtration System                                                                                                                                                                                                                                                                                                                                                                                                                                                                                                                        |                  |
| <b>Power:</b>                 | 115 Volts, 60 Hz                                                                                                                                                                                                                                                                                                                                                                                                                                                                                                                                                   |                  |
| <b>Activation By:</b>         | Manual Activation on Fountain and Independent Manual Activation on Bottle Filler                                                                                                                                                                                                                                                                                                                                                                                                                                                                                   |                  |
| <b>Mounting Type:</b>         | Wall Mounted                                                                                                                                                                                                                                                                                                                                                                                                                                                                                                                                                       |                  |
| <b>Chilling Option:</b>       | 8.0 gph                                                                                                                                                                                                                                                                                                                                                                                                                                                                                                                                                            | Non-Refrigerated |
| <b>Installation Location:</b> | Indoor                                                                                                                                                                                                                                                                                                                                                                                                                                                                                                                                                             |                  |

**Installation**

- Prior to rough-in consult with local, state and federal codes for proper mounting height.
- Shipped with complete instructions and wall mounting bracket.
- Removable side and front panels provide easy access for installation.

**Finishes**

- Standard cabinet finish: Greystone powder coated paint on galvanized steel.
- Optional finishes: Sandstone powder coated paint; Stainless steel (at additional cost).

**Options**

- One piece chrome plated brass bubbler (036700-001)
- VersaFilter

**Limited 5-Year Warranty**

(Continental limits of the United States and Canada) Five years on the sealed refrigeration system and most component parts. Detailed warranty certificate enclosed with each water cooler; sample available upon request.

**Export Warranty**

One year on components parts. Detailed warranty certificate enclosed with each drinking fountain; sample copy available upon request.

**Certifications/Compliance**

- Certified to UL 399 and CAN/CSA C22.2 No.120 (electric water coolers only)
- Product Certified to NSF/ANSI Standard 61-G & 372 and conforms with the lead content requirements for "Lead Free" plumbing as defined by California, Vermont, Maryland, and Louisiana state laws and the U.S. Safe Drinking Water Act
- These water coolers comply with the requirements of ADA (Americans with Disabilities Act) when properly installed

**TMS EQUIPARTS**  
NORTHEAST

**TOLL FREE: 800-442-6622**  
**PITTSBURGH: 412-781-9100**  
[www.equiparts.net](http://www.equiparts.net)

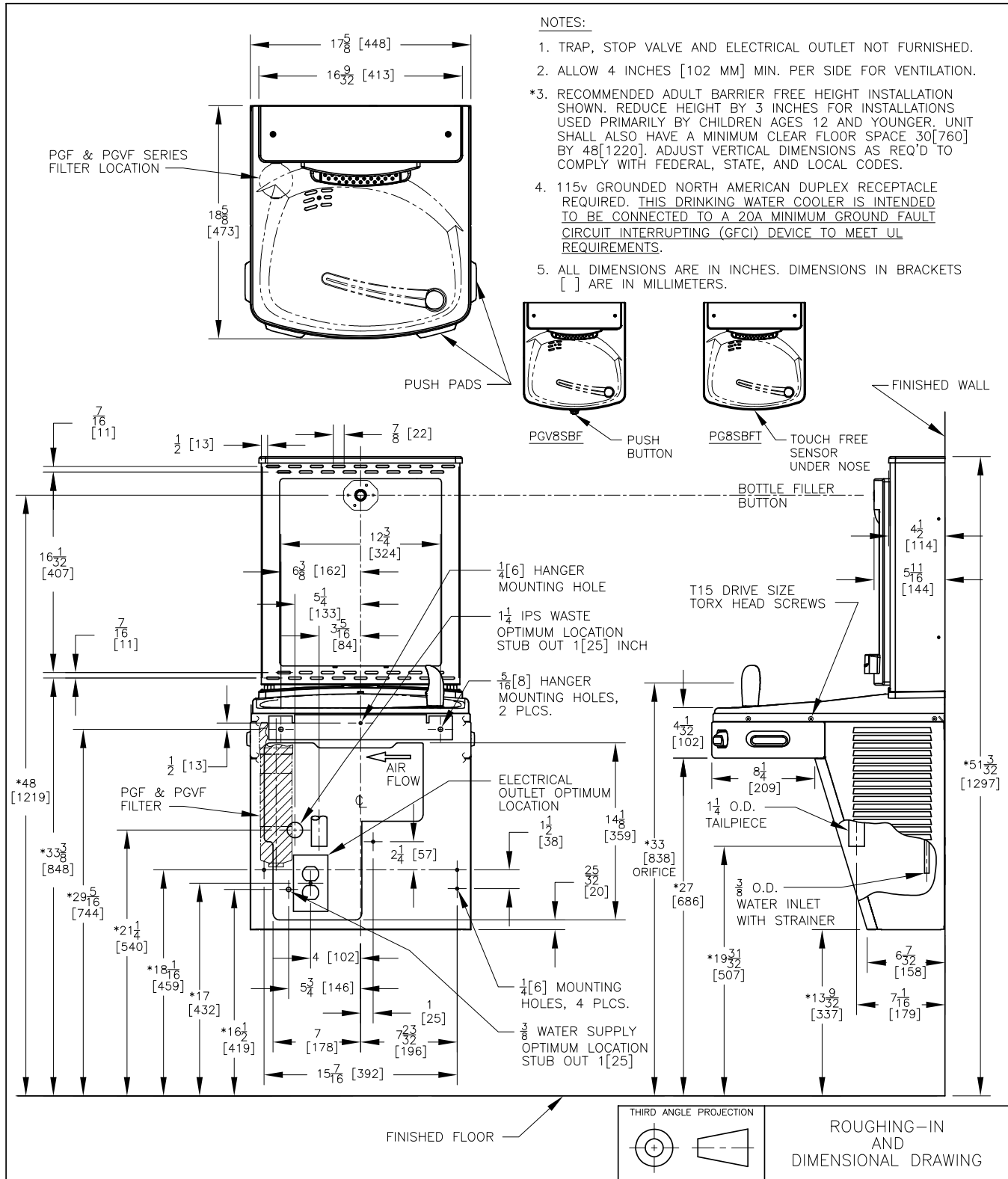
*That Hard to Find Part is Right Here !*

**WARNING:**  
Cancer and Reproductive Harm  
[www.P65Warnings.ca.gov](http://www.P65Warnings.ca.gov)

\*Industry standard rating condition 80°F inlet water temperature



# OASIS® VERSACOOLER® II WITH VERSAFILLER®



  
**TOLL FREE: 800-442-6622**  
**PITTSBURGH: 412-781-9100**  
[www.equiparts.net](http://www.equiparts.net)  
*That Hard to Find Part is Right Here!*

**WE KNOW WATER.**

OASIS is a registered trademark of LVD Acquisition, LLC dba OASIS International, © 2022 LVD Acquisition | AS0023-F-2201