

THE HINGE DOCTOR®

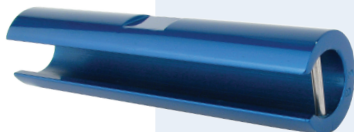
Fix Sagging Doors in Fifteen Seconds!

The **Hinge Doctor**® is the time saving, hinge restoration tool you have been looking for. Sagging doors repaired in seconds! We are very serious here. You need to see and use it to believe it. Hinge Doctors® are available in handy kits or individually.



#36752

For Standard Commercial
4-1/2" x 4-1/2" Butt Hinges



#36754

For Ball Bearing & Larger
Commercial Hinges



#36755

For Prison and
Institutional Hinges, and
Standard Spring Hinges



Hinge Doctor Kit

#36758

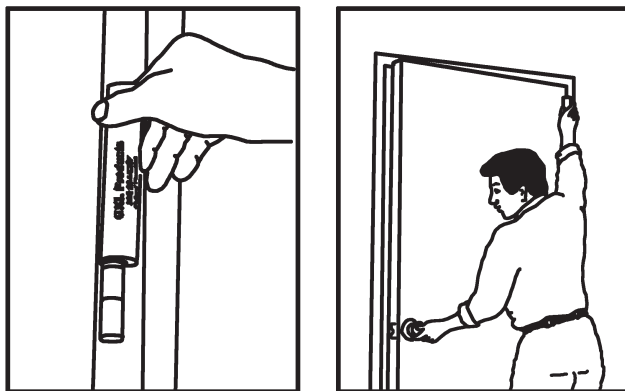
Kit includes all three Hinge Doctors,
as well as "The Hulk" for most
residential hinges.

THE HINGE DOCTOR®

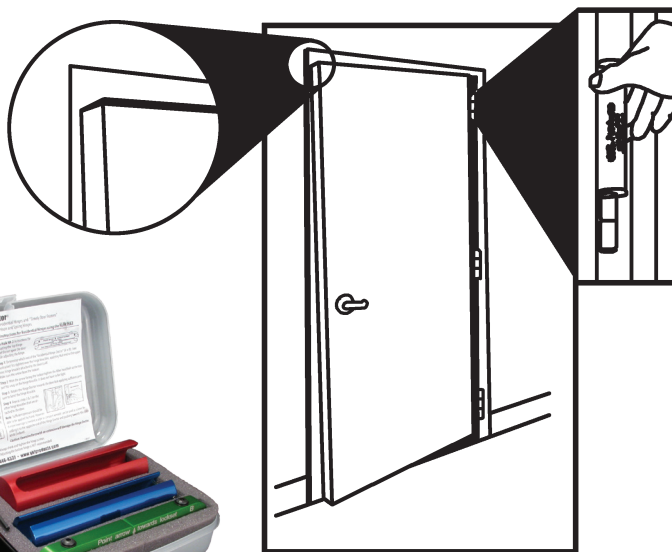


INSTRUCTIONS: This tool is designed to adjust new, worn, or improperly adjusted commercial butt hinges that cause the door to sag or drag. To fix the door, slip the tool over the top door hinge, and open the door. This action causes the door hinge to bind while the tool is in place.

Open the door only three to four inches past the point where it binds against the tool, then remove the tool from the hinge, check the door, and repeat if necessary.



Usually, it is only necessary to adjust the top hinge. However, if there is still a large gap between the door and the frame (above the top hinge) after you've adjusted the top hinge, then adjust the center hinge as well.



NEVER adjust the bottom hinge unless the leading edge of the door hits the bottom portion of the door jamb.

Hinges that have been adjusted too much will be hard to close. If this happens, place a 1/8" allen wrench right behind the knuckles and between the two plates of the hinge, and then push the door closed. This will reverse the first adjustment. Adjust the door again as necessary with the hinge adjuster tool.

