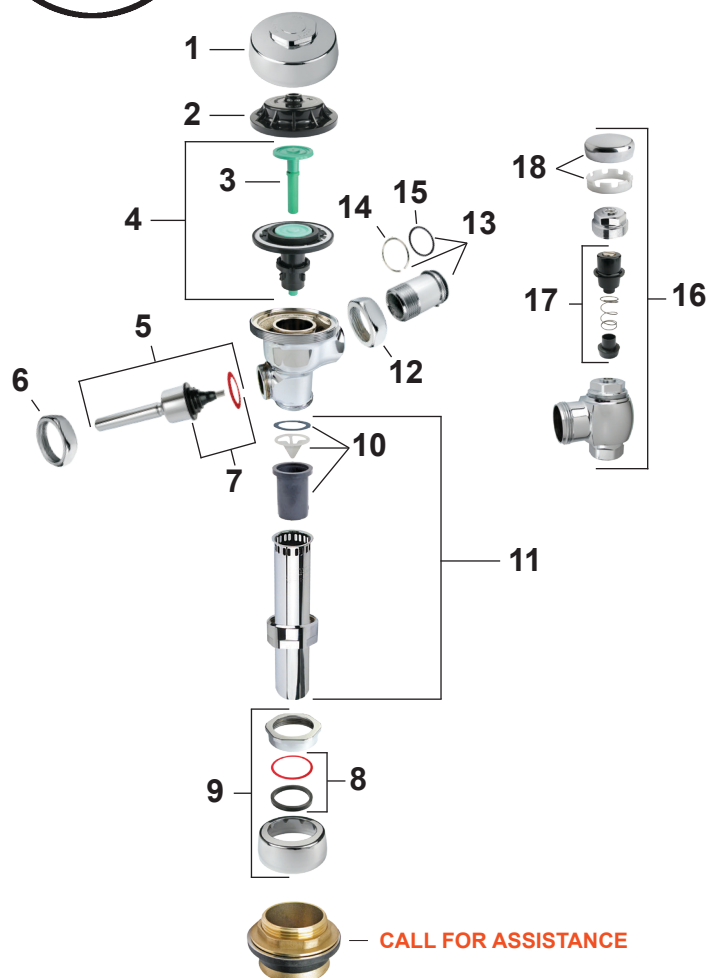
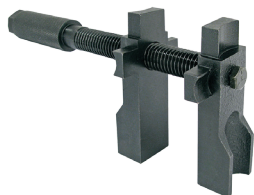


# SLOAN ROYAL

**WITH DUAL FILTERED BYPASS**  
**NEW STYLE SINCE 1998**



— CALL FOR ASSISTANCE



**#03145**  
**MULTI-PURPOSE**  
**INSIDE SPUD WRENCH**

This expansion spud wrench has four sizes in one. Rust resistant hardened and tempered jaws. Made of heavy duty iron. Also used for pipe nipples up to 3-1/2" diameter.

1	#08049	A72	C.P. Cover
2	#08050	A71	Inside Cover
3	#08004	A19AC	Closet R. Valve (White)
	#08005	A19AU	Urinal R. Valve (Black)
	#08345	A19ALC	Low Consumption R. Valve (Green)
4	#08563	A1038A	3.5 Closet Retro Kit
	#08752	A1044A	2.4 Closet Retro Kit
	#08564	A1041A	1.6 Closet Low Consumption
	#08937	A1045A	1.28 Closet Low Consumption
	#08562	A1037A	1.5 Urinal Retro Kit
	#08565	A1042A	1.0 Urinal Low Consumption
5	#08566	A1043A	0.5 Urinal Low Consumption
	#08069	B73A	A.D.A. Handle Assy
6	#08054	A6	C.P. Handle Nut
7	#08439	B51A	Triple Seal Handle Kit
8	#08020	EQUIPARTS	1-1/2" Gasket Kit
	#08021	EQUIPARTS	1-1/4" Gasket Kit
	#08022	EQUIPARTS	3/4" Gasket Kit
9	#08017	F5AT	1-1/2" Coupling Assy
	#08018	F5AT	1-1/4" Coupling Assy
	#08019	F5AT	3/4" Coupling Assy
10	#08438	V651A	Vacuum Breaker Repair Kit
11	#08467	V600AA	1-1/2" x 9" Vacuum Breaker
	#08466	V600AA	1-1/4" x 9" Vacuum Breaker
	#08465	V600AA	3/4" x 9" Vacuum Breaker
12	#08040	H550	Tailpiece Coupling Nut
13	#08039	H551A	Adj. Tailpiece 2-1/16" (Other Lengths Available)
14	#08038	H552	Locking Ring
15	#08037	H553	"O" Ring
16	#08460	H700A	3/4" V/R Control Stop
	#08464	H700A	1" V/R Control Stop
17	#08032	H541ASD	Control Stop Repair Kit For 3/4" or 1"
18	#08322	H1010ABX	V/R Control Stop Cap Assembly for 3/4" or 1"

# SLOAN ROYAL SINCE 1998

## TROUBLESHOOTING AND MAINTAINING THE ROYAL FLUSH VALVE

### 1 PROBLEM: *FLUSHOMETER DOES NOT FUNCTION (NO FLUSH)*

- CAUSE:**
- A) Control stop or main supply valve is closed.
  - B) Handle assembly is damaged.
  - C) Relief valve is damaged.
- SOLUTION:**
- A) Open control stop or main supply valve.
  - B) Replace handle assembly or repair with handle repair kit.
  - C) Replace relief valve.

### 2 PROBLEM: *HANDLE LEAKS*

- CAUSE:**
- A) Handle seal or handle assembly is damaged.
- SOLUTION:**
- A) Replace handle assembly or repair with handle repair kit.

### 3 PROBLEM: *WATER SPLASHES FROM FIXTURE*

- CAUSE:**
- A) Control stop is open wider than necessary.
  - B) Water saver/ conventional diaphragm assembly is installed on low consumption fixture, or closet diaphragm assembly is installed on urinal fixture.
- SOLUTION:**
- A) Adjust control stop for desired delivery of water volume.
  - B) Determine the required flush volume (see label on valve or markings on fixture.) Replace diaphragm assembly or relief valve for appropriate flush volume of fixture.

### 4 PROBLEM: *VOLUME OF WATER IS INSUFFICIENT TO ADEQUATELY SIPHON FIXTURE*

- CAUSE**
- A) Control stop is not open wide enough.
  - B) Diaphragm assembly is damaged.
  - C) Low consumption diaphragm assembly is installed on water saver/ conventional fixture or urinal diaphragm assembly is installed on closet fixture.
  - D) Inadequate water volume or pressure is available from supply.
- SOLUTION:**
- A) Adjust control stop for desired delivery of water volume.
  - B) Replace diaphragm assembly.
  - C) Determine the required flush volume (see label on valve or markings on fixture.) Replace diaphragm assembly or relief valve for appropriate flush volume of fixture.
  - D) Increase flow rate or pressure to the valve. If gauges are not available to measure supply pressure/ volume, remove relief valve from diaphragm assembly and open the control stop. If the fixture siphons, additional water volume is required. Install higher flushing volume relief valve or diaphragm assembly or cut flow ring from guide. If the fixture DOES NOT siphon (or low consumption flush is required,) additional steps must be taken to increase the water pressure and/or volume at the water supply. Contact fixture manufacturer for minimum supply requirements of fixture.

### 5 PROBLEM: *FLUSHOMETER VALVE CLOSSES IMMEDIATELY (SHORT FLUSH)*

- CAUSE:**
- A) Worn or damaged diaphragm assembly.
  - B) Handle assembly is damaged.
  - C) Low consumption diaphragm assembly is installed on water saver/ conventional fixture or urinal diaphragm assembly is installed on closet fixture.
- SOLUTION:**
- A) Replace diaphragm assembly.
  - B) Replace B-73-A handle or repair with B-51-A handle repair kit.
  - C) Determine the required flush volume (see label on valve or markings on fixture). Replace diaphragm assembly or relief valve for appropriate flush volume of fixture.

### 6 PROBLEM: *LENGTH OF FLUSH IS TOO LONG (LONG FLUSH) OR FAILS TO SHUT OFF.*

- CAUSE:**
- A) By-pass hole (upper filter ring) of diaphragm assembly is dirty.
  - B) Relief valve or diaphragm assembly is damaged.
  - C) Water saver/ conventional diaphragm assembly is installed on low consumption fixture or closet diaphragm assembly is installed on urinal fixture.
  - D) Inside cover is damaged.
  - E) Line water pressure dropped and is insufficient to close valve.
  - F) Relief valve is not seated properly.
- SOLUTION:**
- A) Remove diaphragm assembly. Disassemble the filter rings from the diaphragm, wash under running water, and reassemble. Replace as necessary.
  - B) Replace relief valve or diaphragm assembly.
  - C) Determine the required flush volume (see label on valve or markings on fixture). Replace diaphragm assembly or relief valve for appropriate flush volume for fixture.
  - D) Install new A-71 inside cover.
  - E) Close control stop until pressure is restored.
  - F) Disassemble diaphragm components (relief valve, filter rings, and diaphragm unit), wash under running water, and reassemble. Replace as necessary.

### 7 PROBLEM: *CHATTERING NOISE IS HEARD DURING FLUSH*

- CAUSE:**
- A) Inside cover is damaged.
  - B) Relief valve or diaphragm assembly is damaged.
- SOLUTION:**
- A) Install new inside cover.
  - B) Replace relief valve or diaphragm assembly.

#### CARE AND CLEANING INSTRUCTIONS

DO NOT USE abrasive or chemical cleaners to clean Flushometers that may dull the luster and attack the chrome or decorative finish. Use ONLY mild soap and water, then wipe dry with a clean towel or cloth. When cleaning the bathroom tile, to protect the Flushometer from any splattering of cleaner. Acids and cleaning fluids can discolor or remove chrome plating.