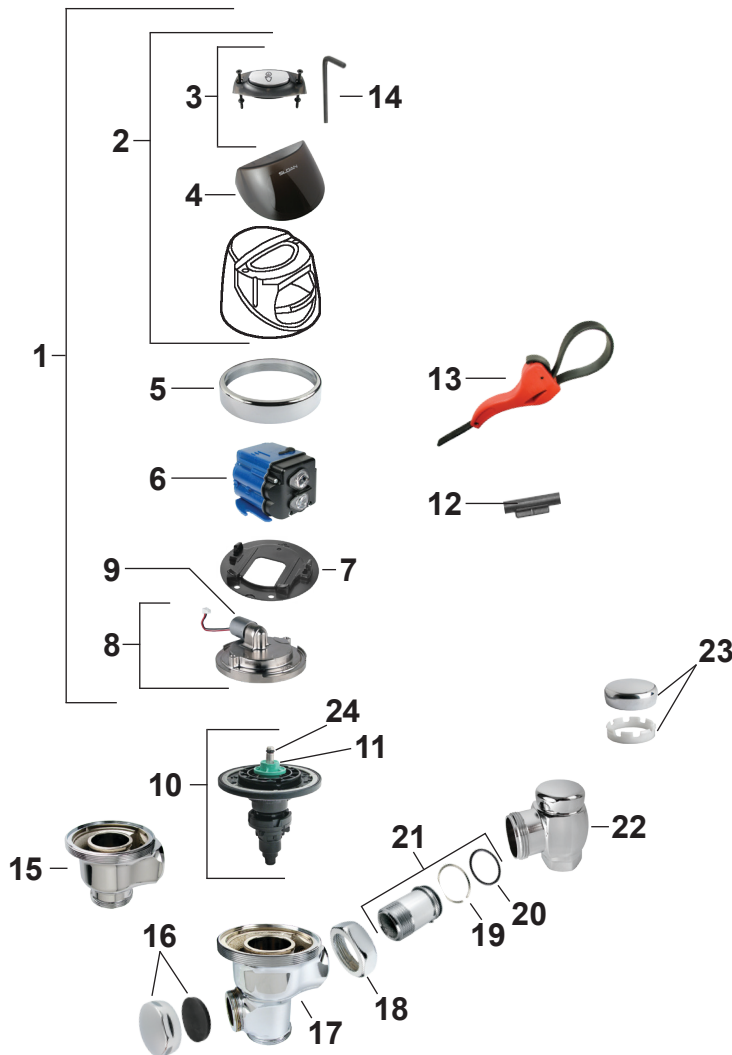


SLOAN G2 OPTIMA PLUS

NEW STYLE SINCE 2003



#32737

Energizer Alkaline
AA Batteries
(4 Required)

1	#08696	G2 Cover/Ring/Sensor Assy - Closet
	#08699	G2 Cover/Ring/Sensor Assy. - Urinal Also Available To Fit Zurn
2	#08701	Cover Assy. w/Override Button
3	#08715	Override Button Assy. (Includes Screws & Hex Wrench)
	#08707	Screws And Hex Wrench
4	#08705	Lens Window Cover
5	#08421	Locking Ring for Cover
6	#08697	G2 Electronic Module - Closet
	#08698	G2 Electronic Module - Urinal
7	#08702	Plastic Sub Base
8	#08720	Base W/Solenoid
9	#08721	G2 Solenoid Only
10	#85629	Drop-In Repair Kit Urinal w/ Batteries (Includes 0.125 And 0.25 GPF Vol Regulator)
	#08695	Drop-In Repair Kit Urinal w/ Batteries (Includes 0.5 GPF Vol Regulator)
	#08137	Drop-In Repair Kit Urinal w/ Batteries (Includes 1.0 And 1.5 GPF Vol Regulator)
	#08285	Drop-In Repair Kit Closet w/ Batteries (Includes 1.6 And 3.5 GPF Vol Regulator)
	#08710	Drop-In Repair Kit w/ Batteries (Includes 2.4 GPF Vol Regulator)
INCLUDES BATTERIES		
11	#08703	3.5 GPF White Volume Regulator
	#08704	0.5,1.0,1.6 GPF Green Volume Regulator
	#08706	1.5 GPF Black Volume Regulator
	#08708	2.4 GPF Blue Volume Regulator
12	#08711	Range Adjustment Tool
13	#34727	EQUIPARTS Strap Wrench
14	#37171	7/64" Hex Wrench
15	#08461	Valve Body Without Handle Opening
16	#08396	Cover for Handle Opening w/ Gasket
17	#SP795	Valve Body With Handle Opening
18	#08040	Adjustable Tailpiece Coupling Nut
19	#08038	Adjustable Locking Ring
20	#08037	Adjustable "O" Ring
21	#08039	Adjustable Tailpiece 2-1/16 (Other Lengths Available)
22	CALL FOR ASSISTANCE	Control Stop
23	#08322	1" VP Stop Cap
	#08321	3/4" VP Stop Cap
24	#05121	1/4 OD x 1/8 ID x 1/16 T "O" Ring

TROUBLESHOOTING AND MAINTAINING THE G2 OPTIMA PLUS FLUSHOMETER

1 PROBLEM: *SENSOR FLASHES CONTINUOUSLY ONLY WHEN USER STEPS WITHIN RANGE*

CAUSE: A) Unit in start-up mode.

SOLUTION: A) No problem. This feature is active for the first ten minutes of operation.

2 PROBLEM: *VALVE DOESN'T FLUSH; SENSOR NOT PICKING UP USER*

CAUSE: A) Range too short.

SOLUTION: A) Increase the range.

3 PROBLEM: *VALVE DOESN'T FLUSH; SENSOR PICKING UP OPPOSITE WALL OR SURFACE, OR ONLY FLUSHES WHEN SOME ONE WALKS BY. RED LIGHT FLASHES CONTINUOUSLY FOR FIRST TEN MINUTES EVEN WITH NO ONE IN FRONT OF THE SENSOR*

CAUSE: A) Range too long.

SOLUTION: A) Shorten range.

4 PROBLEM: *VALVE DOES NOT FLUSH EVEN AFTER ADJUSTMENT*

CAUSE A) Range adjustment potentiometer set at full "max" or full "min" setting.

B) Batteries completely used up.

C) Problem with electronic sensor module.

SOLUTION: A) Readjust potentiometer away from full "max" or "min" setting.

B) Replace batteries.

C) Call **EQUIPARTS** to replace Electronic Sensor Module.

5 PROBLEM: *UNIT FLASHES FOUR QUICK TIMES WHEN USER STEPS WITHIN RANGE.*

CAUSE: A) Batteries low.

SOLUTION: A) Replace batteries.

6 PROBLEM: *VALVE DOES NOT SHUT OFF*

CAUSE: A) By-pass orifice in diaphragm is clogged with dirt or debris, or by-pass is clogged by an invisible gelatinous film due to "overtreated" water.
B) Dirt or debris fouling stem or flex tube diaphragm.
C) O-ring on stem or flex tube diaphragm is damaged or worn.
D) Problem with electronic sensor module.

SOLUTION: A) Remove flex tube diaphragm and wash under running water. **NOTE:** Size of orifice in by-pass is of utmost importance for the proper metering of water by the valve. **EQUIPARTS** recommends that you *do not enlarge or damage this orifice*. Replace inside parts assembly if cleaning does not correct the problem.

B) Remove inside parts assembly and wash under running water.

C) Replace quad seal if necessary.

D) Turn solenoid counterclockwise very slightly.

E) Replace electronic module.

7 PROBLEM: *NOT ENOUGH WATER TO FIXTURE*

CAUSE: A) Wrong flush volume regulator installed in flex tube diaphragm kit.
B) Wrong Optima Plus model installed; i.e. 1 GPF urinal installed on 3.5 gal. closet fixture.
C) Enlarged bypass in diaphragm.
D) Control stop not adjusted properly.
E) Inadequate volume or pressure at supply.

SOLUTION: A) Install the correct regulator.
B) Replace with proper Optima Plus model.
C) Replace flex tube diaphragm.
D) Readjust control stop.
E) Increase water pressure or supply (flow) to valve.

8 PROBLEM: *TOO MUCH WATER TO FIXTURE*

CAUSE: A) Wrong flush volume regulator installed in flex tube diaphragm kit.
B) Control stop not adjusted properly.
C) Wrong Optima Plus model installed; i.e. 3 GPF model installed on 1.0 or 1.5 gal. urinal fixture.
D) Dirt in diaphragm bypass.

SOLUTION: A) Install the correct regulator.
B) Readjust control stop.
C) Replace with proper Optima Plus model.
D) Clean under running water or replace flex tube diaphragm.

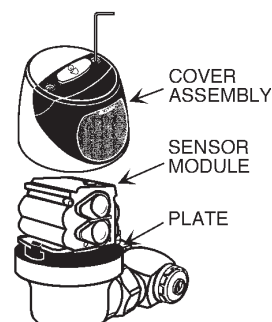
9 PROBLEM: *UNIT WORKS WITH COVER OFF, BUT NOT ON*

CAUSE: A) Broken override button or missing rubber divider.

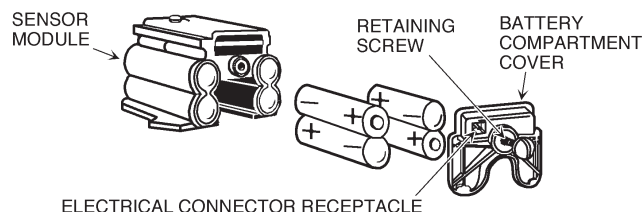
SOLUTION: A) Replace override button or cover.

BATTERY REPLACEMENT

When required, replace batteries with four (4) alkaline type AA batteries. **Note:** water does not have to be turned off to replace batteries. Loosen the two (2) screws on top of unit. Remove the complete cover assembly. Lift the sensor module from its plate. Unplug the electrical connector from battery compartment cover. Loosen the retaining screw on battery compartment cover. Install four (4) alkaline type AA batteries exactly as illustrated below.



Install battery compartment cover and secure with retaining screw. Make certain that battery compartment cover is fully compressed against gasket to provide a seal. Do not overtighten. Plug the electrical connector into the battery compartment cover. Reinstall the sensor module onto the plate. Reinstall the complete cover assembly onto the plate. Tighten the two (2) screws on top of the unit.



CARE AND CLEANING INSTRUCTIONS

DO NOT use abrasive or chemical cleaners to clean Flushometers, they may dull the luster and attack the chrome or special decorative finishes. Use ONLY soap and water, then wipe dry with clean cloth or towel. While cleaning the bathroom tile, the Flushometer should be protected from any splattering of cleaner. Acids and cleaning fluids can discolor or remove chrome plating.