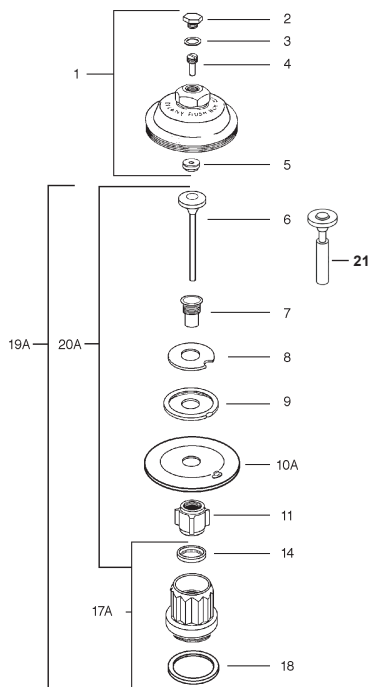
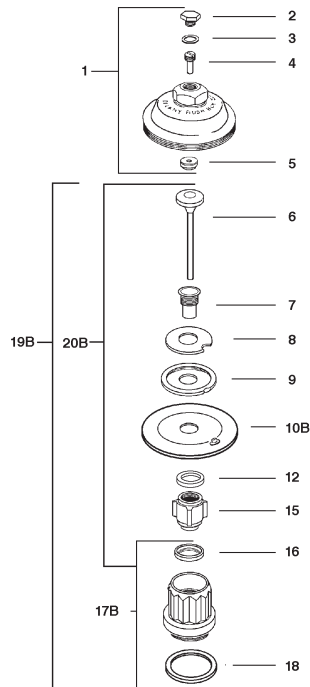


DELANY FLUSHBOY

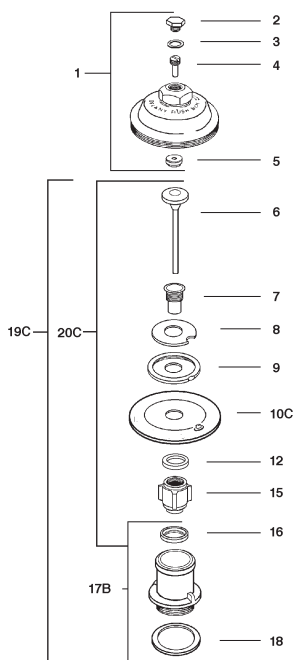
4.5 GPF W/ 1" SUPPLY



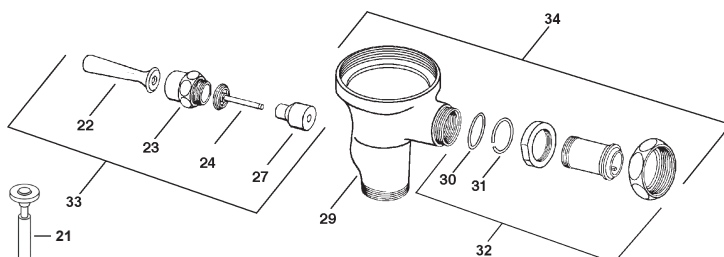
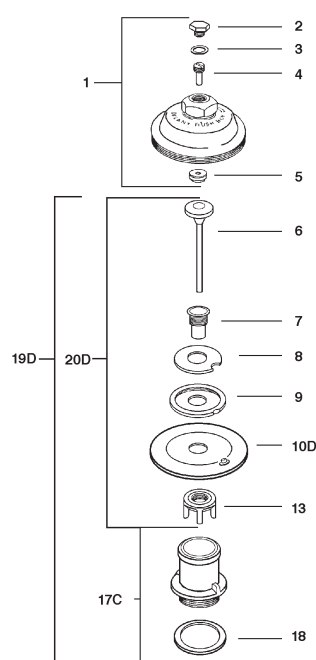
3.5 GPF W/ 1" SUPPLY



1.6 GPF W/ 1" SUPPLY



1.0 GPF W/ 3/4" SUPPLY



1	#08175	Cover Assembly
2	#08150	Cover Screw
3	#08151	Washer For Cover Screw (Omitted In Later Production)
4	#08152	Regulation Screw
5	#08154	Packing For Cover
6	#08155	Auxiliary Valve Seat
7	#08156	Diaphragm Bushing
8	#08157	Auxiliary Valve Seat
9	#08158	Auxiliary Valve Seat Holder
10A	#08177	Closet Diaphragm w/ Auxiliary Valve Seat 4.5 GPF
10B	#08895	Closet Diaphragm w/ Auxiliary Valve Seat 3.5 GPF
10C	#08897	Closet Diaphragm w/ Auxiliary Valve Seat 1.6 GPF
10D	#08178	Urinal Diaphragm w/ Auxiliary Valve Seat 1.5 GPF
11	#08160	Seat Guide
12	#08793	Refill Ring
13	#08181	Seat Guide
14	Only Available in 19A	
15	#69229	Seat Guide
16	Only Available in 19B, 19C, or 19D	
17A	#08176	4.5 GPF Main Valve Seat
17B	#08180	3.5 & 1.6 GPF Main Valve Seat
17C	#08893	1.0 GPF Main Valve Seat
18	#08162	Main Valve Seat Washer
19A	#08472	Diaphragm Operating Assy 4.5 GPF
19B	#08344	Diaphragm Operating Assy 3.5 GPF
19C	#08743	Diaphragm Operating Assy 1.6 GPF
19D	#08713	Diaphragm Operating Assy 1.0 GPF
20A	#08656	Diaphragm Operating Assembly (Less Seat) 4.5 GPF
20B	#08848	Diaphragm Operating Assembly (Less Seat) 3.5 GPF
20C	#08690	Diaphragm Operating Assembly (Less Seat) 1.6 GPF
20D	#08847	Diaphragm Operating Assembly (Less Seat) 1.0 GPF
21	#08600	Auxiliary Valve (For Non Hold Open)
22	#08163	Handle
23	#08164	Handle Nut
24	#08165	Operating Stem (For Non Hold Open, Use w/ Item 21)
27	#08166	Flexer
29	#08167	Kwikfit Valve Body
30	#08037	O-ring
31	#08038	Clamping Ring
32	#08171	Kwikfit Union Tailpiece
33	#08173	Handle Assembly
34	#08174	Kwikfit Valve Body Assembly

DELANY VACUUM BREAKERS

